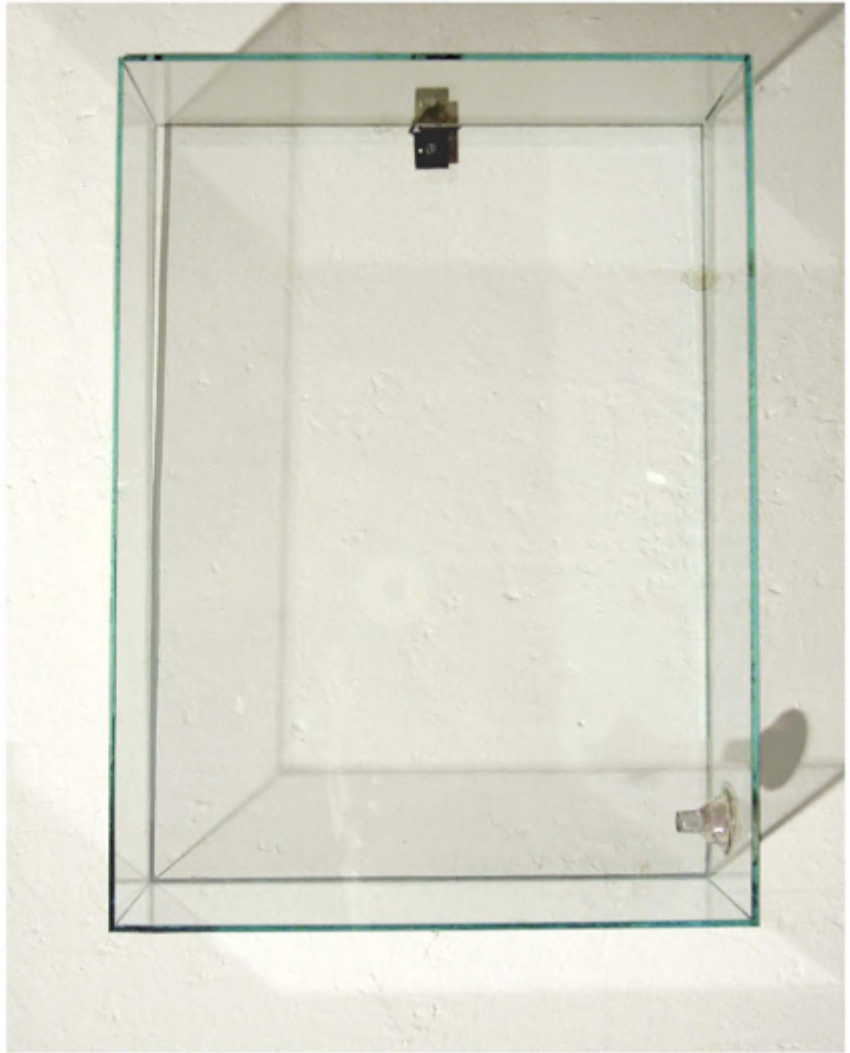




o.T.,
Nr.46
Glas, Metall, Motor, Fisch
2007



o.T., 250 x 182 x 70
Nr.52
Glas, Metall, Kunststoff
2007

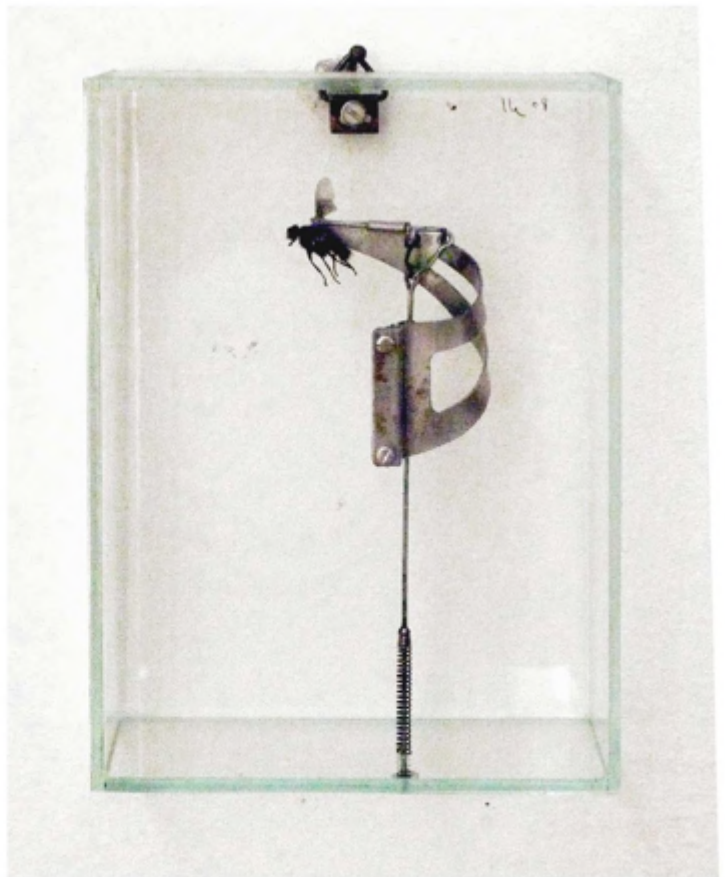


o.T., 110 x 83 x 39
Nr.23
Glas, Metall, Kunststoff,
Fliege
2008

o.T., 110 x 84 x 39
Nr. 12
Glas, Metall, Kunststoff
2008



o.T., 110 x 83 x 42
Nr.32
Glas, Metall, Fliege
2008

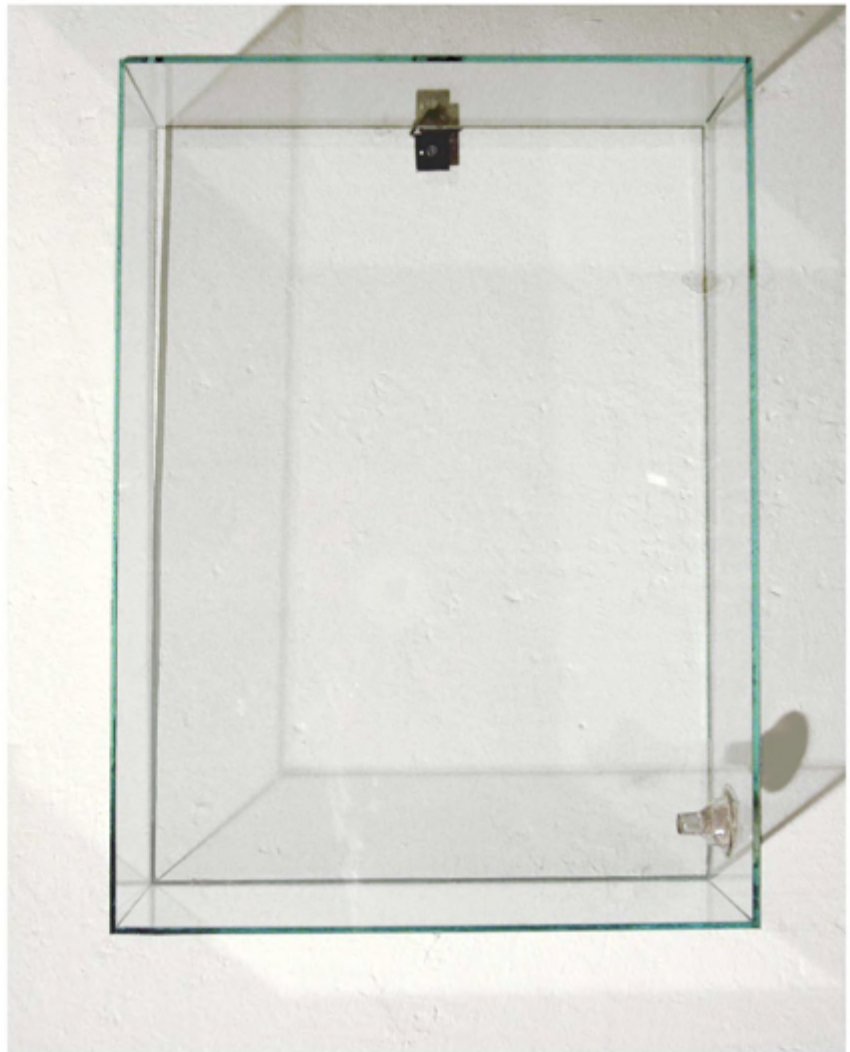




o.T.,
Nr.51
Glas, Metall, Gummiventil
2008

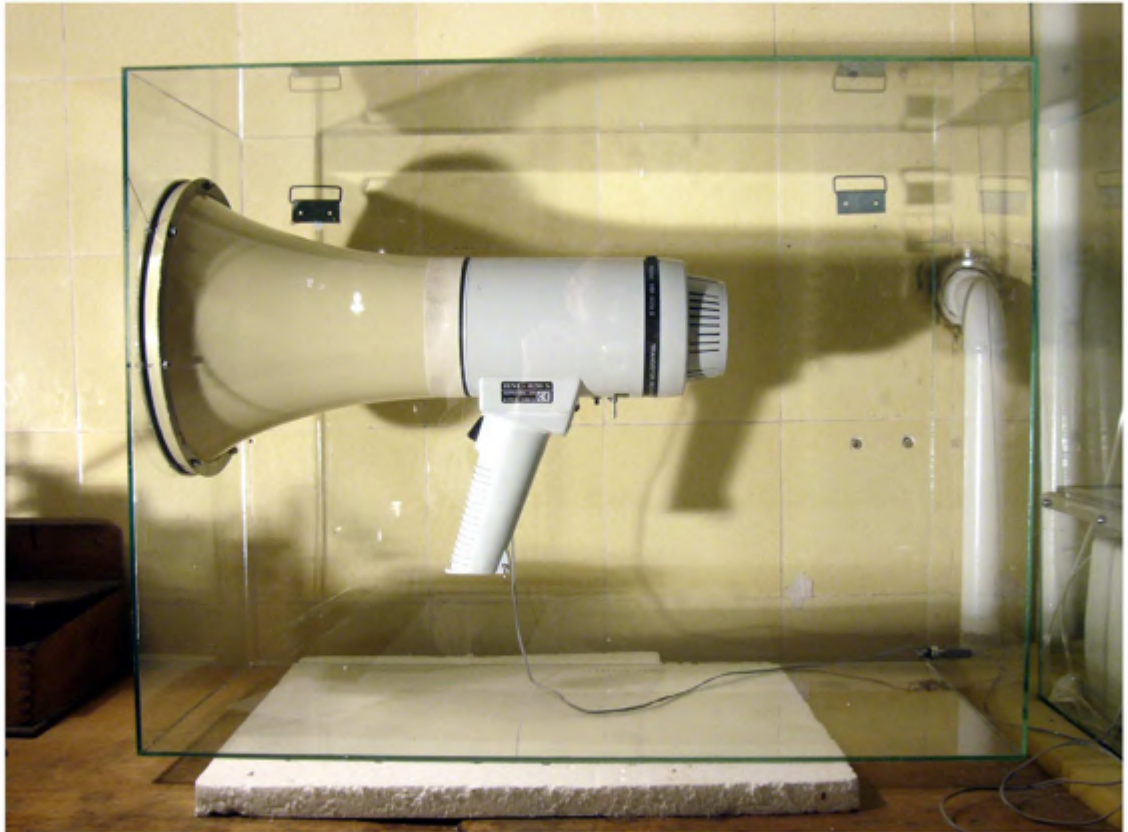


o.T., 250 x 182 x 70
Nr.52
Glas, Metall, Kunststoff
2007

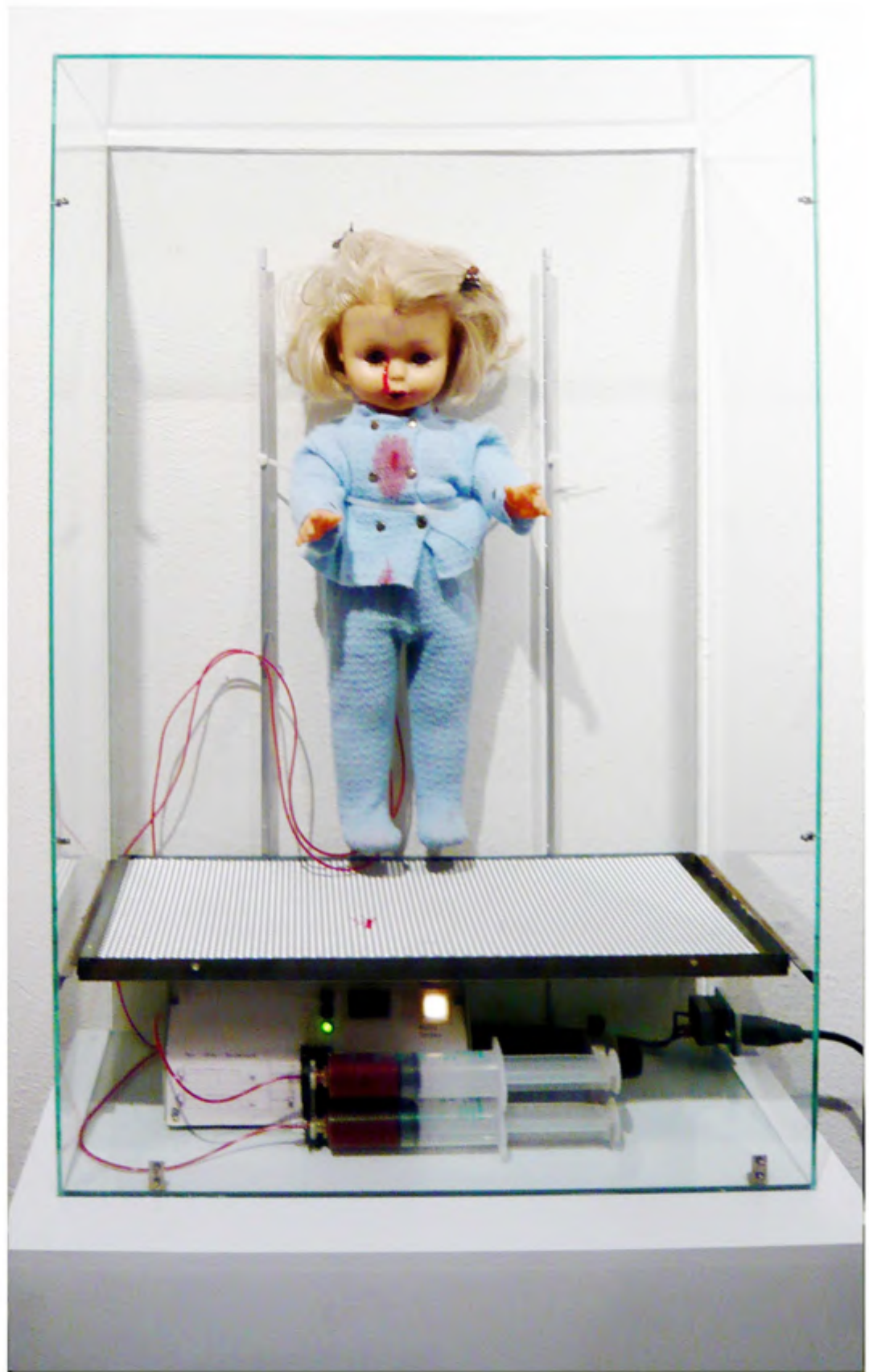


o.T., 110 x 84 x 39
Nr. 12
Glas, Metall, Kunststoff
2008



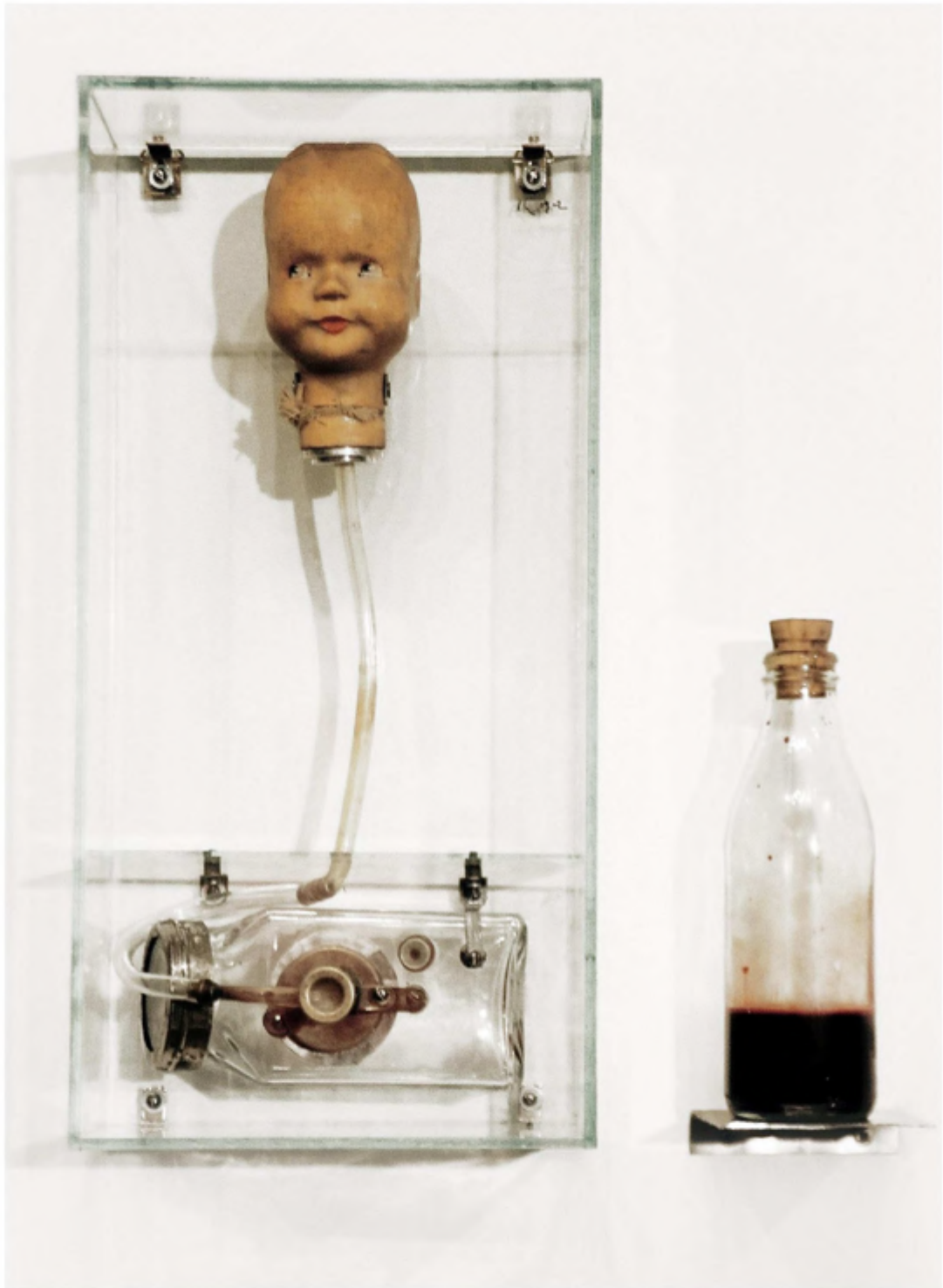


o.T., 560 x 432 x 249
Nr.48
Glas, Metall, Megafon
2008



o.T., 786 x 515 x 233
Nr.31
div. Materialien
2007

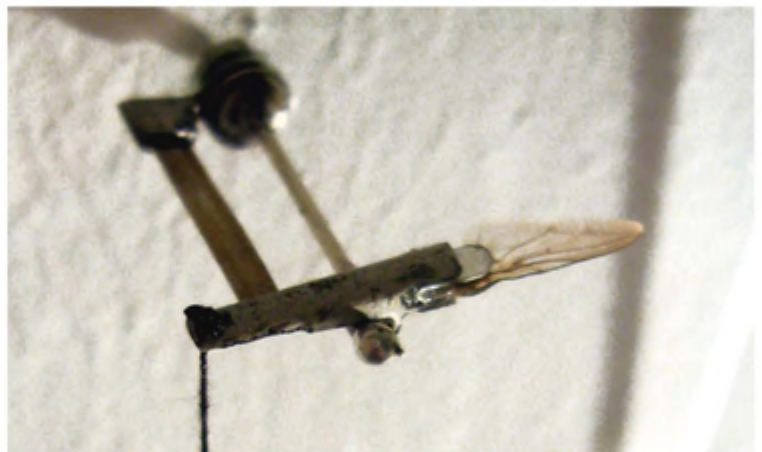
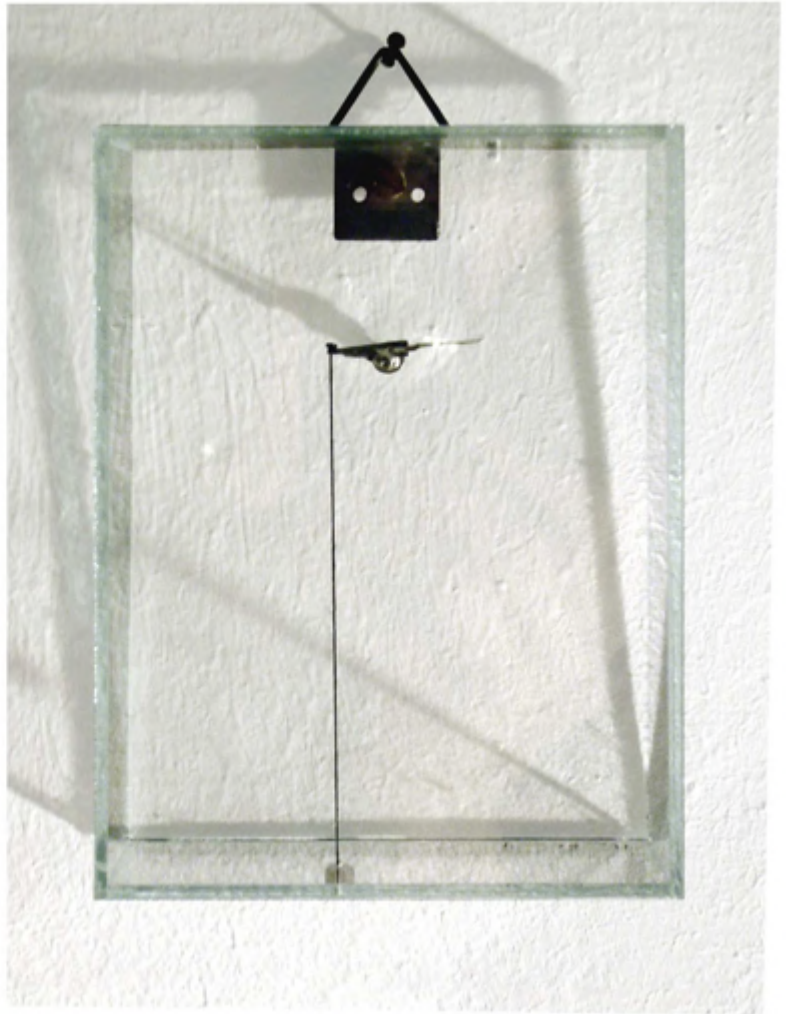




o.T., 348 x 173 x 134
Nr.19
Glas, Metall, Kunststoff, Holz
(Blut zum Befüllen)
2002

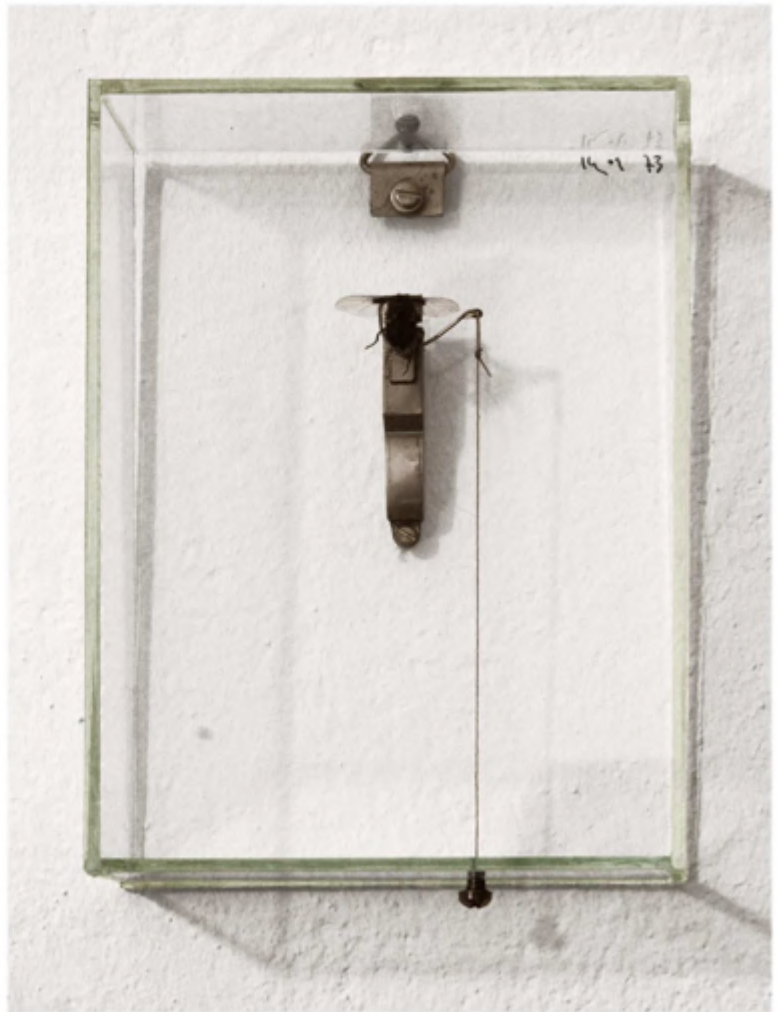


o.T.,
Nr.22
div. Materialien
2008



o.T., 110 x 83 x 40
Nr.27
Glas, Metall, Insektenflügel
2004

o.T., 110 x 83 x 40
Nr.73
Glas, Metall, Fliege
2009





o.T., 110 x 83 x 38
Nr.75
Glas, Metall, Insektenflügel
2010





o.T., 490 x 355 x 140
Nr.11
Glas, Metall, Gummihandschuh
2007



o.T., 420 x 305 x 118
Nr.53
Glas, Metall, Latexhandschuh
2008



o.T., 406 x 274 x 145
Nr.81
Glas, Metall, Latex, Plastikkanister
2008





o.T., 273 x 205 x 58
Nr.17
Glas, Metall, Fliege
2008



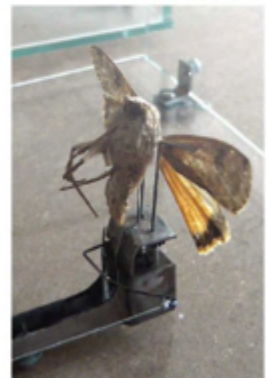


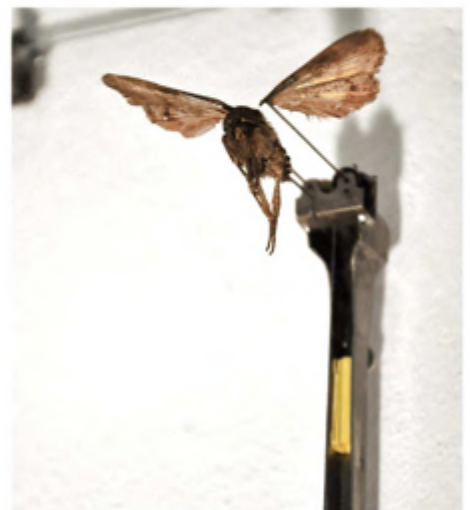
o.T.,
Nr.35
Glas, Metall, Fliegentorso
2008



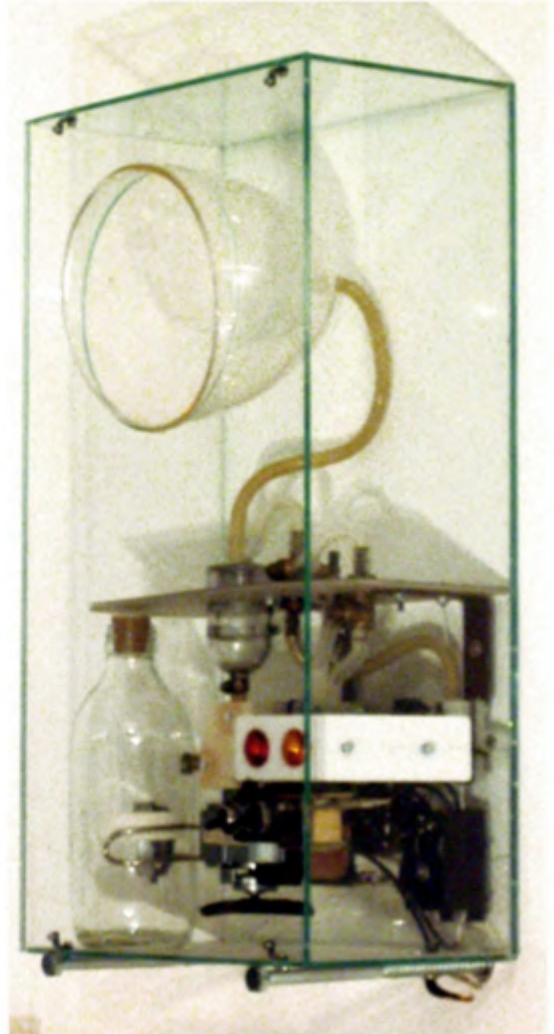
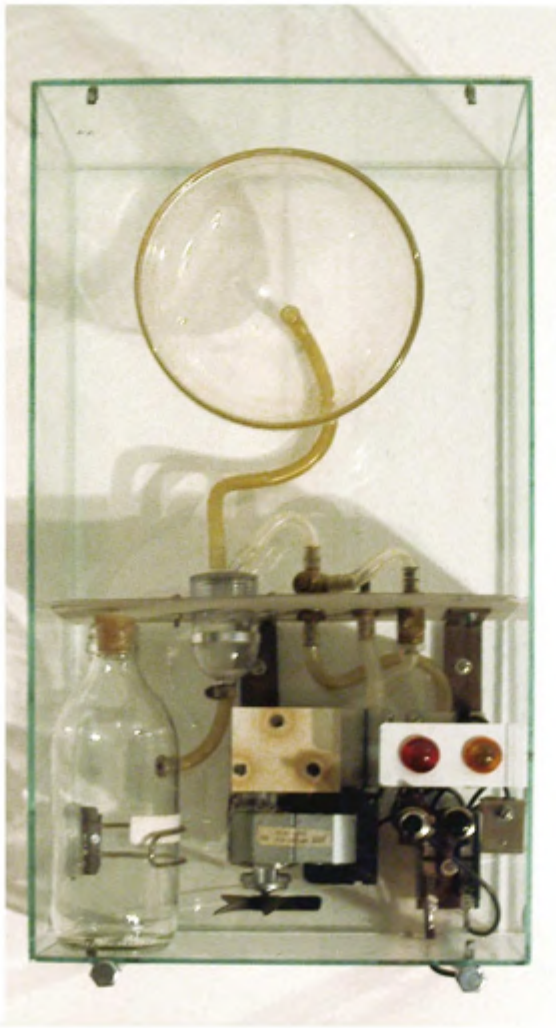


o.T., 250 x 166 x 45
Nr.78
Glas, Metall, Nachtfalter
2010

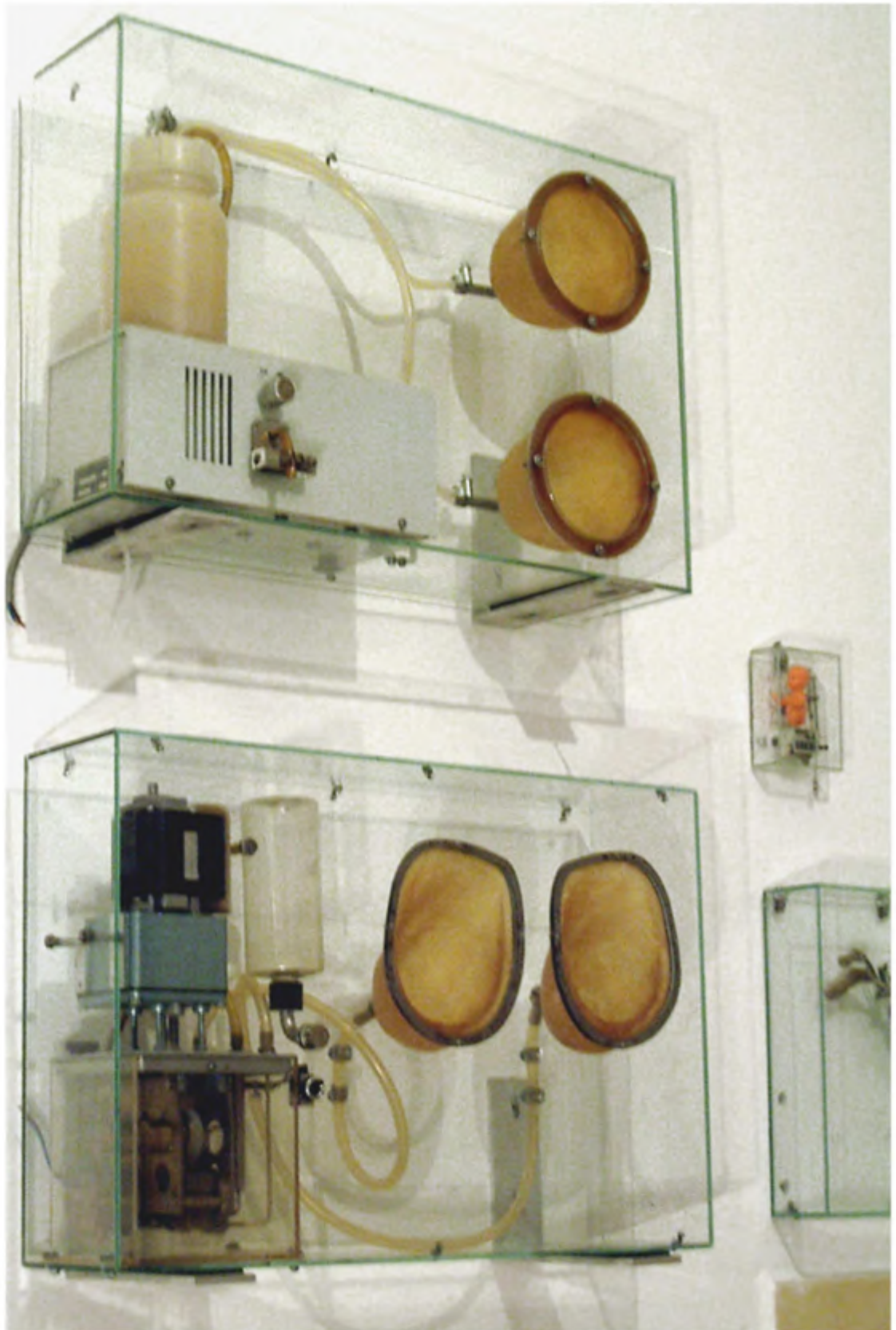




o.T., 315 x 211 x 66
Nr.80
Glas, Metall, Nachtfalter
2010



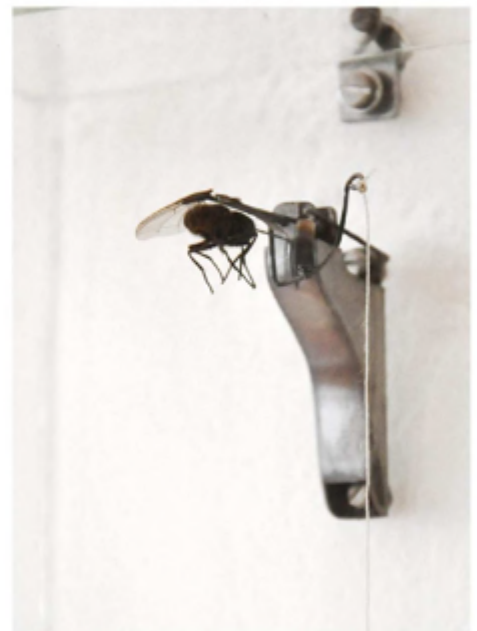
o.T.
Nr.54
div. Materialien



o.T., jew. 560 x 370 x 138
Nr.50 a+b
div. Materialien
2004



o.T., 110 x 82 x 37
Nr.79
Glas, Metall, Fliege
2010

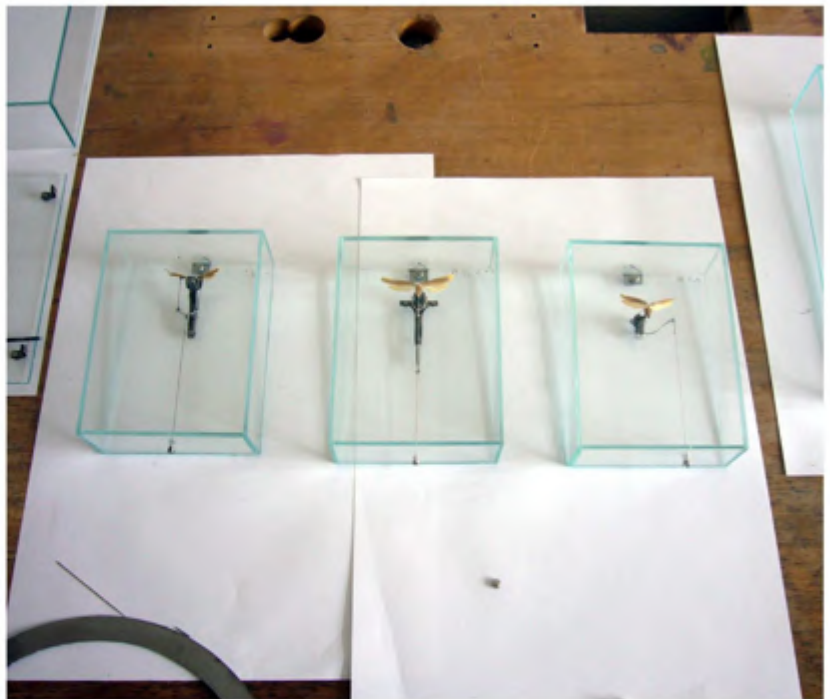




o.T., 362 x 260 x 96
Nr.34b
Glas, Kunststoff, Metall, Latex
2005 (2002)



o.T., 304 x 163 x 85 ; 304 x 135 x 88
Nr.18 a+b
div. Materialien
2001; 1998



o.T.,
Triptychon
Nr.68, 69, 70
2009



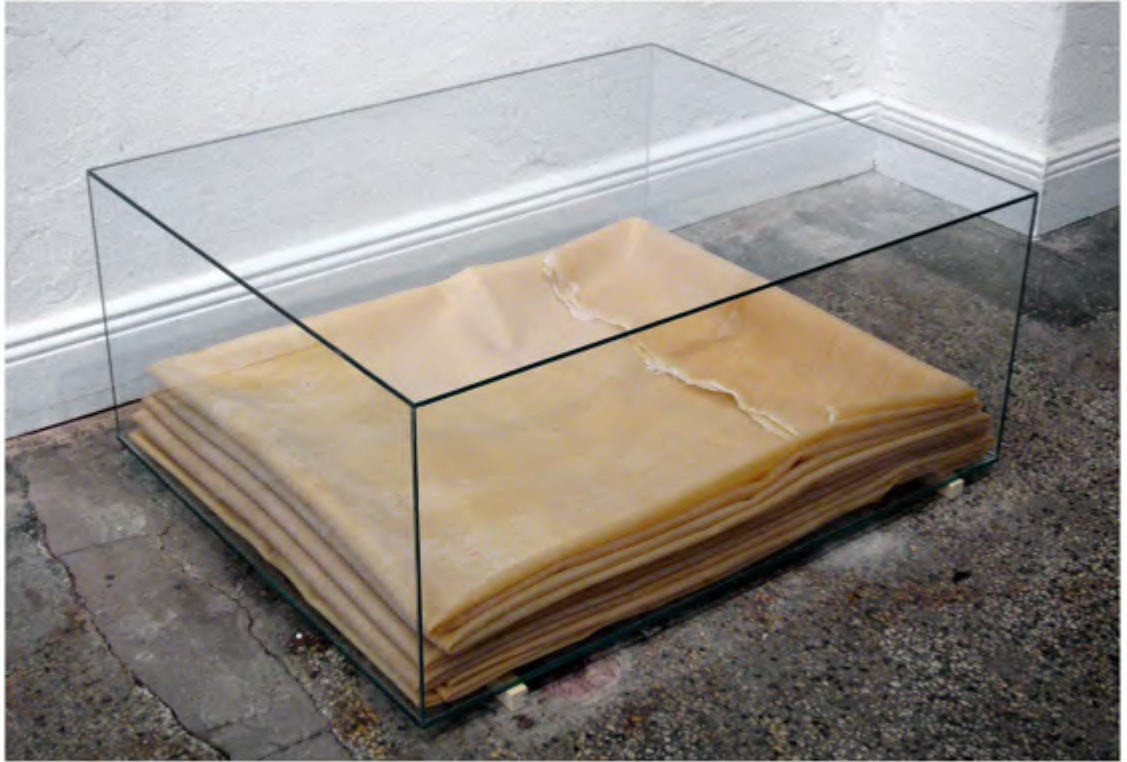
Nr. 71, 2009



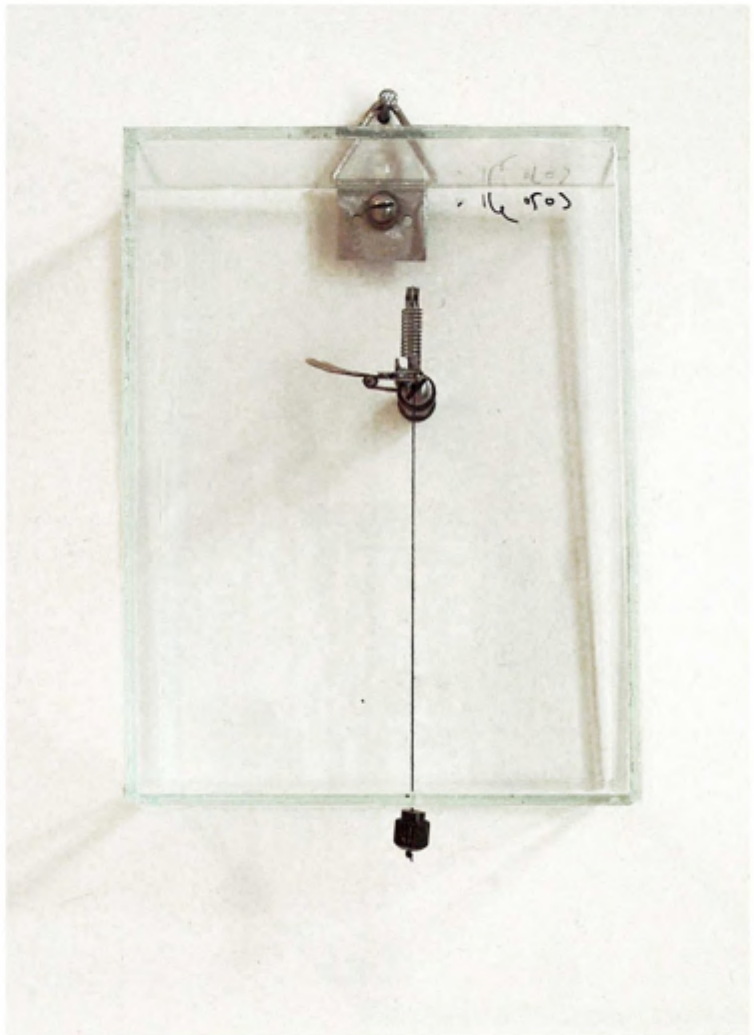
Nr. 71, 2009



o.T.
Nr. 72
Latex, Metallring, Glas
2009



Nr. 72
Ansicht Ladenraum
Ansicht Keller



o.T., 110 x 83 x 39
Nr.21
Glas, Metall, Faden, Insektenflügel
2003



o.T.,
Nr.14
Glas, Metall, Libellenflügel
2007



o.T., 185 x 135 x 44
Nr.77
Glas, Metall, Libellenflügel
2010





o.T., 250 x 183 x 67
Nr.58
Glas, Metall, Fisch
2003

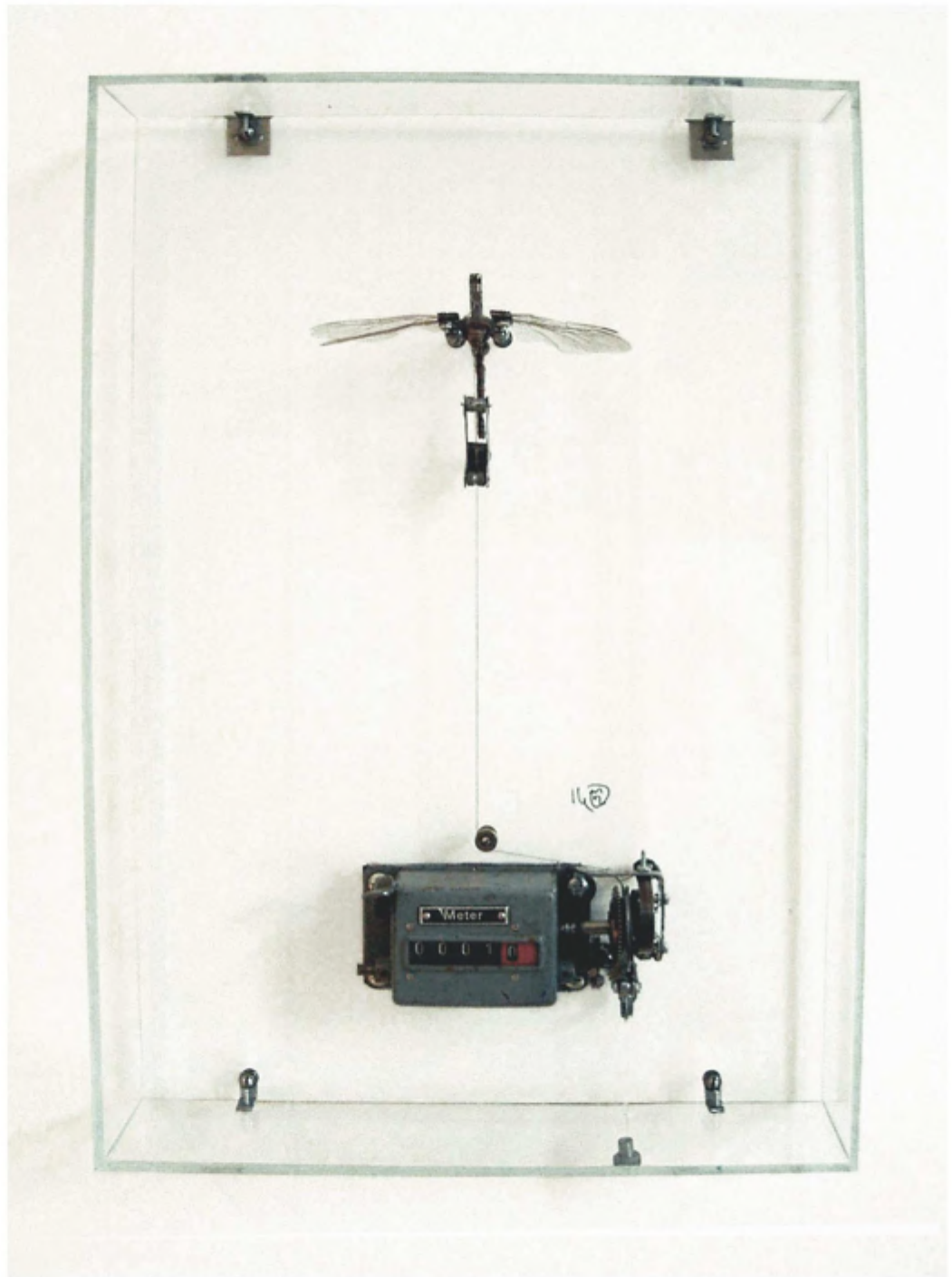


o.T., 305 x 183 x 77
Nr.64
Glas, Metall, Kunststoff, Kaninchenpfote
2002



Milchtritt, 444 x 300 x 100
Nr.47
Glas, Metall, Fuchspfote
2003





o.T., 375 x 255 x 62
Nr.13
Glas, Metall, Libelle
2003



o.T., 500 x 385 x 188
Nr.20
Glas, Metall, Latex
2006